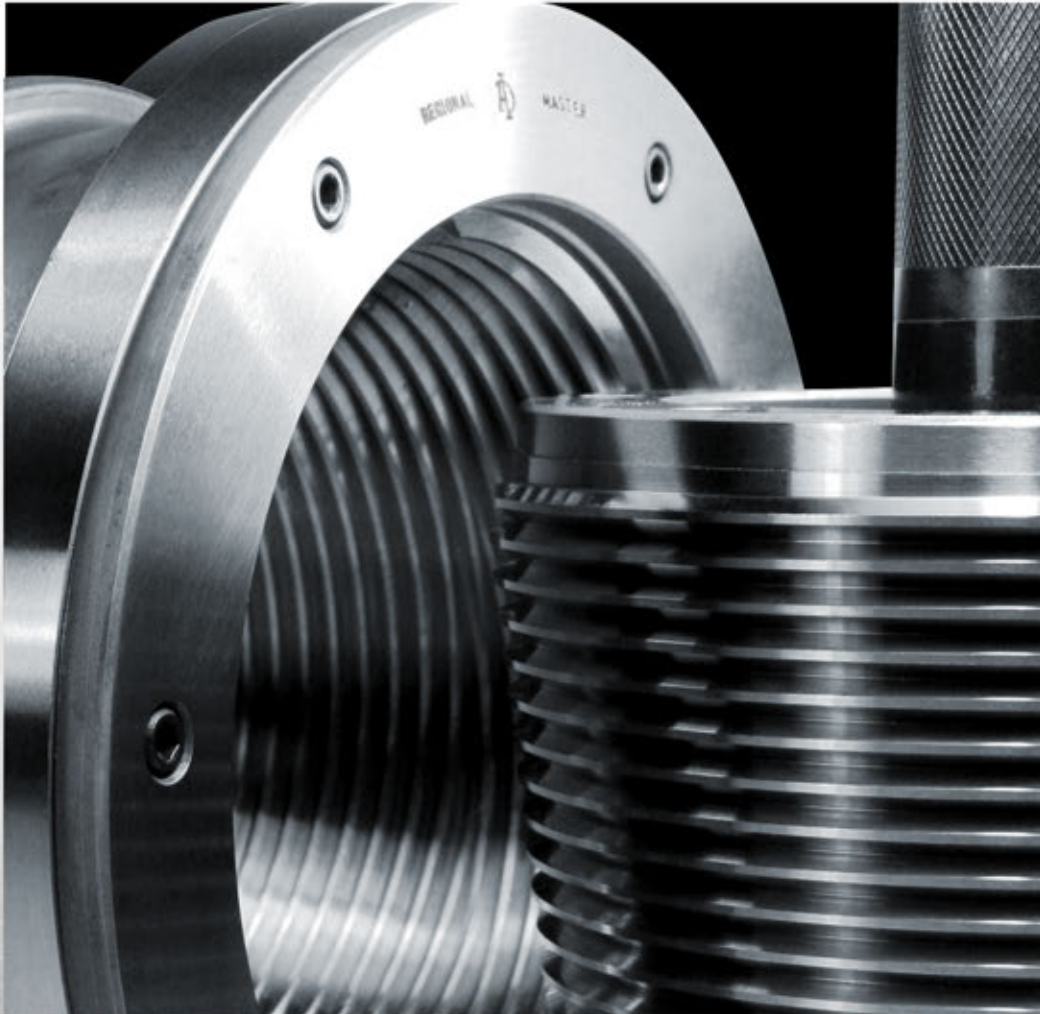




PMC *LONE STAR*



API OIL COUNTRY GAGES PRODUCT OVERVIEW



QUALITY ★ SERVICE ★ RESPONSIBILITY

www.pmclonestar.com



Calibration Laboratory
Cert #1697.01



Lic. #5B-0005
Lic. #7-2-0092
Lic. #11B-0016





PMC LONE STAR

PMC Lone Star offers a wide range of products manufactured to the highest quality possible. All of the gages manufactured by PMC Lone Star have one thing in common: unmatched accuracy and durability. Field proven for almost a century, our master and working gages meet and exceed specifications established by the American Petroleum Institute (A.P.I.) and are used as the benchmark for calibration by the National Institute of Standards Technology (N.I.S.T.). PMC Lone Star strives to offer our customers the highest possible value when it comes to their gaging requirements. PMC Lone Star maintains the most complete source of Master Gages outside of N.I.S.T. All of our gages are made of tool steel hardened to Rockwell C 60-62 and are cryogenically frozen to insure their stability. Each gage is put through a series of in-process and final inspections with tolerances to ± 0.0002 of an inch ($\pm 5 \mu\text{m}$). We then qualify each gage using a certified master gage, and provide a calibration report detailing the measured dimensions and the serial number of the master gage used for the inspection. The quality and reliability of our gages have made them the overwhelming choice of coupling shops, pipe and tube mills around the world. PMC Lone Star stands ready with a trained staff of gage experts to help you accomplish all of your gaging needs, whether they are API sanctioned threads or premium proprietary connections. We look forward to serving your needs today and in the future.

A handwritten signature in black ink, appearing to read "NBB", is written over a horizontal line that extends to the right.

Nick Bosworth
President
PMC Lone Star

For more information on what PMC Lone Star can do for your company, please feel free to contact any one of our technical sales staff at:

38383 Willoughby Parkway • Willoughby, Ohio 44094

T: 440-953-3300 F: 440-953-3301

Houston Office: T: 936-321-7992 F: 936-321-7993



PMC LONE STAR

PROVIDING GAGE SOLUTIONS SINCE 1912

PRODUCTS & SERVICES

API Rotary Tool Joint Plug & Ring Gages

API Numbered Rotary Shouldered Connections

API Standard Casing Gages, Pipe Gages, & Tubing Gages

Thread Profile Gages

Negative Flank (Hook) Thread Gages

Premium Proprietary Thread Gages

Tapered Cylindrical Plug & Ring Gages

Re-certification of API Work & Master Gages

Re-certification of Customer Specials

Re-certification of ANSI/ASME Thread Plug & Ring Gages

Re-certification of Cylindrical Plug & Ring Gages

Re-certification of Tapered Cylindrical Plug & Ring Gages

Authorized Distributor of Gagemaker

Authorized Distributor of Allen Gauge and Tool Company

Custom Made Gage Storage Cases



API SPEC 5B GAGES WORKING/MASTERS



CASING		
SIZE	T.P.I.	T.P.F.
4-1/2*	8	3/4
5*	8	3/4
5-1/2*	8	3/4
6-5/8*	8	3/4
7*	8	3/4
7-5/8*	8	3/4
8-5/8*	8	3/4
9-5/8*	8	3/4
10-3/4	8	3/4
11-3/4	8	3/4
13-3/8	8	3/4
16	8	3/4
18-5/8	8	3/4
20*	8	3/4

(*) Short / Long Casing is available for working rings

BUTTRESS CASING		
SIZE	T.P.I.	T.P.F.
4-1/2	5	3/4
5	5	3/4
5-1/2	5	3/4
5-3/4	5	3/4
6-5/8	5	3/4
7	5	3/4
7-5/8	5	3/4
8-5/8	5	3/4
9-5/8	5	3/4
10-3/4	5	3/4
11-3/4	5	3/4
13-3/8	5	3/4
16	5	1
18-5/8	5	1
20	5	1

UPSET (E.U.E) / NON-UPSET (N.U.E) TUBING			
SIZE	UPSET T.P.I.	NON-UPSET T.P.I.	T.P.F.
1.050	10	10	3/4
1.315	10	10	3/4
1.660	10	10	3/4
1.900	10	10	3/4
2-3/8*	8	10	3/4
2-7/8*	8	10	3/4
3-1/2*	8	10	3/4
4*	8	8	3/4
4-1/2*	8	8	3/4

(*) Step blocks are available for working rings

1.315, 1.660 and 1.900 I.J. Tubing Gages are identical to Non-Upset Tubing Gages of the same size and may be used interchangeably. The 2.063 I.J. Tubing Gages are identical to the 1.900 Upset Tubing Gages and may be used interchangeably. The 1.050 Upset Tubing Gages, the 1.315 Non-Upset Tubing Gages, and the 1.315 I.J. Tubing Gages are identical and may be used interchangeably



LINE PIPE		
SIZE	T.P.I.	T.P.F.
1/8	27	3/4
1/4	18	3/4
3/8	18	3/4
1/2	14	3/4
3/4	14	3/4
1	11-1/2	3/4
1-1/4	11-1/2	3/4
1-1/2	11-1/2	3/4
2	11-1/2	3/4
2-1/2	8	3/4
3	8	3/4
3-1/2	8	3/4
4	8	3/4
5	8	3/4
6	8	3/4
8	8	3/4
10	8	3/4
12	8	3/4
14	8	3/4
16	8	3/4
18	8	3/4
20	8	3/4

EXTREME LINE CASING		
SIZE	T.P.I.	T.P.F.
5	6	1-1/2
5-1/2	6	1-1/2
6-5/8	6	1-1/2
7	6	1-1/2
7-5/8	6	1-1/2
8-5/8	5	1-1/4
9-5/8	5	1-1/4
10-3/4	5	1-1/4

API SPEC 7 GAGES WORKING/MASTERS

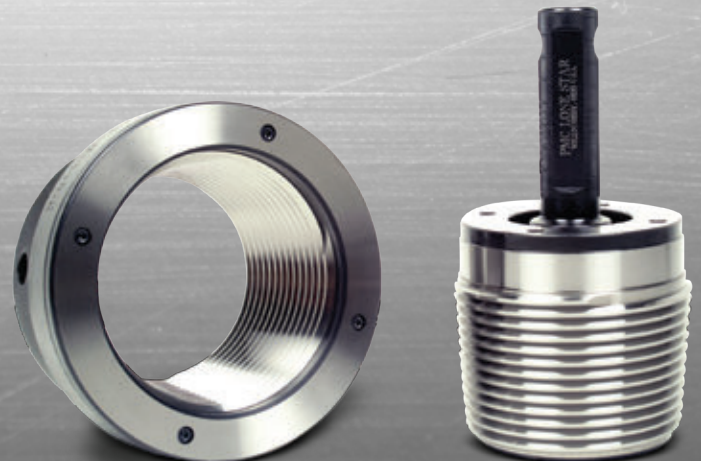


REGULAR ROTARY			
SIZE	T.P.I.	T.P.F.	THD FORM
1	6	1.5	V-0.055
1-1/4	7	2	V-0.020
1-1/2	6	1.5	V-0.055
2-3/8	5	3	V-0.040
2-7/8	5	3	V-0.040
3-1/2	5	3	V-0.040
4-1/2	5	3	V-0.040
5-1/2	4	3	V-0.050
6-5/8	4	2	V-0.050
7-5/8	4	3	V-0.050
8-5/8	4	3	V-0.050

NUMBERED CONNECTIONS (N.C.)			
SIZE	T.P.I.	T.P.F.	THD FORM
NC10	6	1-1/2	V-0.055R
NC12	6	1-1/2	V-0.055R
NC13	6	1-1/2	V-0.055R
NC16	6	1-1/2	V-0.055R
NC23	4	2	V-0.038R
NC26 (2-3/8 I.F.)	4	2	V-0.038R
NC31 (2-7/8 I.F.)	4	2	V-0.038R
NC35	4	2	V-0.038R
NC38 (3-1/2 I.F.)	4	2	V-0.038R
NC40 (4 FH)	4	2	V-0.038R
NC44	4	2	V-0.038R
NC46	4	2	V-0.038R
NC50 (4-1/2 IF) (5 XH)	4	2	V-0.038R
NC56	4	3	V-0.038R
NC61	4	3	V-0.038R
NC70	4	3	V-0.038R
NC77	4	3	V-0.038R

INTERNAL FLUSH (I.F.)			
SIZE	T.P.I.	T.P.F.	THD FORM
2	4	2	V-0.065
2-3/8 (NC26)	4	2	V-0.065
2-7/8 (NC31)	4	2	V-0.065
3-1/2 (NC38)	4	2	V-0.065
4 (NC46) (4-1/2 XH)	4	2	V-0.065
4-1/2 (NC50) (5 XH)	4	2	V-0.065
5-1/2	4	2	V-0.065
6-5/8	4	2	V-0.065

FULL HOLE (F.H.)			
SIZE	T.P.I.	T.P.F.	THD FORM
2-7/8	5	3	V-0.040
3-1/2	5	3	V-0.040
4 (NC40)	4	2	V-0.065
4-1/2	5	3	V-0.040
5-1/2	4	2	V-0.050
6-5/8	4	2	V-0.050



API SPEC 11B GAGES WORKING/MASTERS



MASTER SUCKER ROD & POLISHED ROD GAGES

DESCRIPTION	SIZE					
P-1 GO PLUG MASTER	1/2	5/8	3/4	7/8	1	1-1/8
P-2 GO RING MASTER	1/2	5/8	3/4	7/8	1	1-1/8
P-3 PIN CONE PLUG MASTER	1/2	5/8	3/4	7/8	1	1-1/8
P-4 REF. RING FOR PIN	1/2	5/8	3/4	7/8	1	1-1/8
P-5 MASTER NO GO PIN PLUG	1/2	5/8	3/4	7/8	1	1-1/8
P-6 REF. NO GO PIN RING	1/2	5/8	3/4	7/8	1	1-1/8
P-7 MASTER GO PIN PLUG	1/2	5/8	3/4	7/8	1	1-1/8
P-8 REF. GO PIN RING	1/2	5/8	3/4	7/8	1	1-1/8
B-1 MASTER GO RING	1/2	5/8	3/4	7/8	1	1-1/8
B-2 REF. GO PLUG	1/2	5/8	3/4	7/8	1	1-1/8
B-3 MASTER CONE RING	1/2	5/8	3/4	7/8	1	1-1/8
B-4 REF. PLUG	1/2	5/8	3/4	7/8	1	1-1/8
B-5 MASTER NO GO RING	1/2	5/8	3/4	7/8	1	1-1/8
B-6 REF. NO GO PLUG	1/2	5/8	3/4	7/8	1	1-1/8

WORKING SUCKER ROD & POLISHED ROD GAGES

DESCRIPTION	SIZE					
P-2 GO RING	1/2	5/8	3/4	7/8	1	1-1/8
P-4 RING FOR PIN CONE	1/2	5/8	3/4	7/8	1	1-1/8
P-6 NO GO RING FOR PIN CONE	1/2	5/8	3/4	7/8	1	1-1/8
P-8 GO PIN RING	1/2	5/8	3/4	7/8	1	1-1/8
B-2 GO PLUG	1/2	5/8	3/4	7/8	1	1-1/8
B-4 PLUG	1/2	5/8	3/4	7/8	1	1-1/8
B-6 NO GO PLUG	1/2	5/8	3/4	7/8	1	1-1/8

API SPEC 11AX GAGES WORKING/MASTERS



L-THREAD

SIZE	T.P.I.	T.P.F.
3/8	18	3/4
1/2	14	3/4
3/4	14	3/4

B-THREAD

SIZE	T.P.I.	T.P.F.
178	11-1/2	3/8
225	11-1/2	3/4
275	11-1/2	3/4

MISC. CONNECTIONS

HUGHES H-90		
SIZE	T.P.I.	T.P.F.
2-3/8SL	3	1-1/4
2-7/8SL	3	1-1/4
3-1/2SL	3	1-1/4
3-1/2	3-1/2	2
4	3-1/2	2
4-1/2	3-1/2	2
5	3-1/2	2
5-1/2	3-1/2	2
6-5/8	3-1/2	2
7	3-1/2	3
7-5/8	3-1/2	3
8-5/8	3-1/2	3

MACARONI TUBING (M.T.)		
SIZE	T.P.I.	T.P.F.
3/4	6	1-1/2
1 (1 REG)	6	1-1/2
1-1/4	6	1-1/2
1-1/2 (1-1/2 REG)	6	1-1/2
2-1/16	6	1-1/2

WILSON FLUSH JOINT (W.F.J.)		
SIZE	T.P.I.	T.P.F.
1-13/16	7	2
2-3/8	6	2

BECO		
SIZE	T.P.I.	T.P.F.
3	2	3
3-1/2	2	3
4	2	3
4-1/2	2	3
5-1/4	2	3
6	2	3
7	2	3
8	2	3
10	2	3

IMPROVED BUTTRESS		
SIZE	T.P.I.	T.P.F.
2	8	3/4
2-3/8	8	3/4
2-7/8	8	3/4
3-1/2	8	3/4
4	8	3/4
4-1/2	8	3/4
5-1/2	8	3/4

DI-22		
SIZE	T.P.I.	T.P.F.
4-3/4	2	1-1/2
5-1/4	2	1-1/2
5-3/4	2	1-1/2
6-3/4	2	1-1/2
8-1/4	2	1-1/2
9-1/4	2	1-1/2
9-3/4	2	1-1/2
10-1/2	1-5/8	1-1/2

AMERICAN OPEN HOLE (A.O.H.)		
SIZE	T.P.I.	T.P.F.
2-3/8	4	1-1/2
2-7/8	4	1-1/2
3-1/2	4	1-1/2
4	4	1-1/2
4-1/2	4	1-1/2

PAC		
SIZE	T.P.I.	T.P.F.
2-3/8	4	1-1/2
2-7/8	4	1-1/2
3-1/2	4	1-1/2

MAYHEW		
SIZE	T.P.I.	T.P.F.
2-3/8 JR	4	2
2-3/8 REG	4	1-1/2
2-7/8 FH	4	1-1/2

XTRA HOLE (X.H.)		
SIZE	T.P.I.	T.P.F.
2-7/8	4	2
3-1/2	4	2

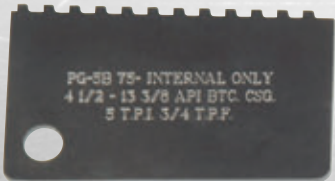
FEDP		
SIZE	T.P.I.	T.P.F.
2-3/8	4	2TPF
2-7/8	4	2TPF

HUGHES EXTERNAL FLUSH (H.E.F.)		
SIZE	T.P.I.	T.P.F.
2-3/8	6	2
2-7/8	6	2
3-1/2	4	2
4-1/2	4	2

SHARP -VEE TUBING UPSET / NON-UPSET			
SIZE	UPSET T.P.I.	NON -UPSET T.P.I.	T.P.F.
1-1/4	11-1/2	-	3/4
1-1/2	11-1/2	11-1/2	3/4
2	10	11-1/2	3/4
2-1/2	10	11-1/2	3/4
3	10	11-1/2	3/4
3-1/2	10	10	3/4
4	10	10	3/4

DI-42		
SIZE	T.P.I.	T.P.F.
9-3/4	2	1
10-1/8	2	1

THREAD PROFILE GAGES



Profile Gage #	Will Check the Following Connections	Thread Form
PG-453	API REG: 2-3/8" thru 4-1/2" API FULL HOLE: 3-1/2", 4-1/2"	V.040 5TPI 3TPF
PG-542	API REGULAR: 6-5/8" API FULL HOLE: 5-1/2", 6-5/8"	V.050 4TPI 2TPF
PG-543	API REGULAR: 5-1/2", 7-5/8", 8-5/8"	V.050 4TPI 3TPF
PG-642	API INTERNAL FLUSH: 2-3/8" thru 5-1/2" API FULL HOLE: 4" HUGHES EXTRA HOLE : 2-7/8" thru 5" HUGHES SLIM HOLE: 2-3/8" thru 4-1/2"	V.065 4 TPI 2 TPF
PG-NC-23-50	API NUMBERED CONNECTIONS #23 thru #50	V.038R 4TPI 2TPF
PG-NC-56-77	API NUMBERED CONNECTIONS #56 thru #77	V.038R 4 TPI 3 TPF
PG-NC-10-16	API NUMBERED CONNECTIONS #10, #12, #13, #16 MACARONI TUBING 3/4", 1-1/4", 1-1/2"	V.055 6TPI 1-1/2TPF
PG-076	AMERICAN OPEN HOLE: 2-3/8" thru 4-1/2"	V.076 4TPI 1-1/2TPF
PG-935-2	HUGHES H-90: 3-1/2" thru 6-5/8"	H-90 3-1/2TPI 2TPF
PG-935-3	HUGHES H-90: 7" thru 8-5/8"	H-90 3-1/2TPI 3TPF
PG-931-1/4"	HUGHES SLIM LINE : 2-3/8" thru 3-1/2"	H-90 3 TPI 1-1/4TPF
PG-415	PAC CONNECTIONS: 2-3/8" thru 3-1/2"	V.076 4TPI 1-1/2TPF
PG-HEF	HUGHES EXTERNAL FLUSH 2-3/8", 2-7/8"	6TPI 2TPF
PG-1-1/4-REG	1-1/4" REGULAR	7TPI 2TPF
PG-1-13/16WFJ	1-13/16" WILSON FLUSH JOINT	7TPI 2TPF
PG-2-3/8-WFJ	2-3/8" WILSON FLUSH JOINT	6TPI 2TPF
PG-8RF	ALL API 8RF CSG TBG DRILL PIPE	8RD FORM 3/4TPF
PG-10RF	ALL API STANDARD TUBING 10RF THREAD	10RD FORM 3/4TPF
PG-8B75	IMPROVED BUTTRESS	8TPI 3/4TPF
PG-8V	8V THREAD API LINE PIPE 2-1/2" thru 20" ALSO FOR AMERICAN STANDARD NPT: thru 20"	8V 3/4TPF
PG-11-1/2V	THREAD API LINE PIPE: 1" thru 2" ALSO FOR AMERICAN STANDARD NPT	11-1/2TPI 3/4TPF
PG-5B75-INT	API BUTTRESS CASING: 4-1/2" thru 13-3/8" INTERNAL	5TPI BUTTRESS 3/4TPF
PG-5B75-EXT	API BUTTRESS CASING: 4-1/2" thru 13-3/8" EXTERNAL	5TPI BUTTRESS 3/4TPF
PG-5B1-INT	API BUTTRESS CASING: 16" AND LARGER INTERNAL	5TPI BUTTRESS 1TPF
PG-5B1-EXT	API BUTTRESS CASING: 16" AND LARGER EXTERNAL	5TPI BUTTRESS 1TPF
PG-6150-INT	EXTREME LINE CASING: 5" thru 7-5/8" INTERNAL	6TPI 1-1/2TPF
PG-6150-EXT	EXTREME LINE CASING: 5" thru 7-5/8" EXTERNAL	6TPI 1-1/2TPF
PG-5125-INT	EXTREME LINE CASING: 8-5/8" thru 10-3/4" INTERNAL	5TPI 1-1/4TPF
PG-5125-EXT	EXTREME LINE CASING: 8-5/8" thru 10-3/4" EXTERNAL	5TPI 1-1/4TPF
PG-BECO	BECO	2TPI 3TPF
PG-DI-22-1.625	DI-22 CONNECTIONS: 10-1/2"	1-5/8TPI 1-1/2TPF
PG-DI-22-2	DI-22 CONNECTIONS: 4-3/4" thru 9-1/4"	2TPI 1-1/2TPF
PG-DI-42	DI-42 CONNECTIONS: 9-3/4", 10-1/8"	2TPI 1TPF
PG-0500	PROFILE GAGE	V.038R 4TPI 1/2TPF
PG-0750	PROFILE GAGE	V.038R 4TPI 3/4TPF
PG-1000	PROFILE GAGE	V.038R 4TPI 1TPF
PG-1250	PROFILE GAGE	V.038R 4TPI 1-1/4TPF
PG-1500	PROFILE GAGE	V.038R 4TPI 1-1/2TPF

STANDARD STUB, NATIONAL ACME & UNIFIED AS LISTED
ANY OTHER PITCH IS SPECIAL

PG-2SA, PG-4SA, PG-5SA, PG-6SA, PG-8SA, PG-10SA, PG-12SA
PG-4NA, PG-5NA, PG-6NA, PG-8NA, PG-10NA, PG-12NA, PG-16NA,
PG-6UN, PG-8UN, PG-12UN, PG-16UN